

EPP
 RESIDENCE
 LOT 00
 COLLINGSWOOD TOWNSHIP
 CLEARVIEW
 TOWNSHIP
 FOUNDATION
 PLAN.

1/4" = 1'-0"	EPP.
APRIL 2-19	OF 7.

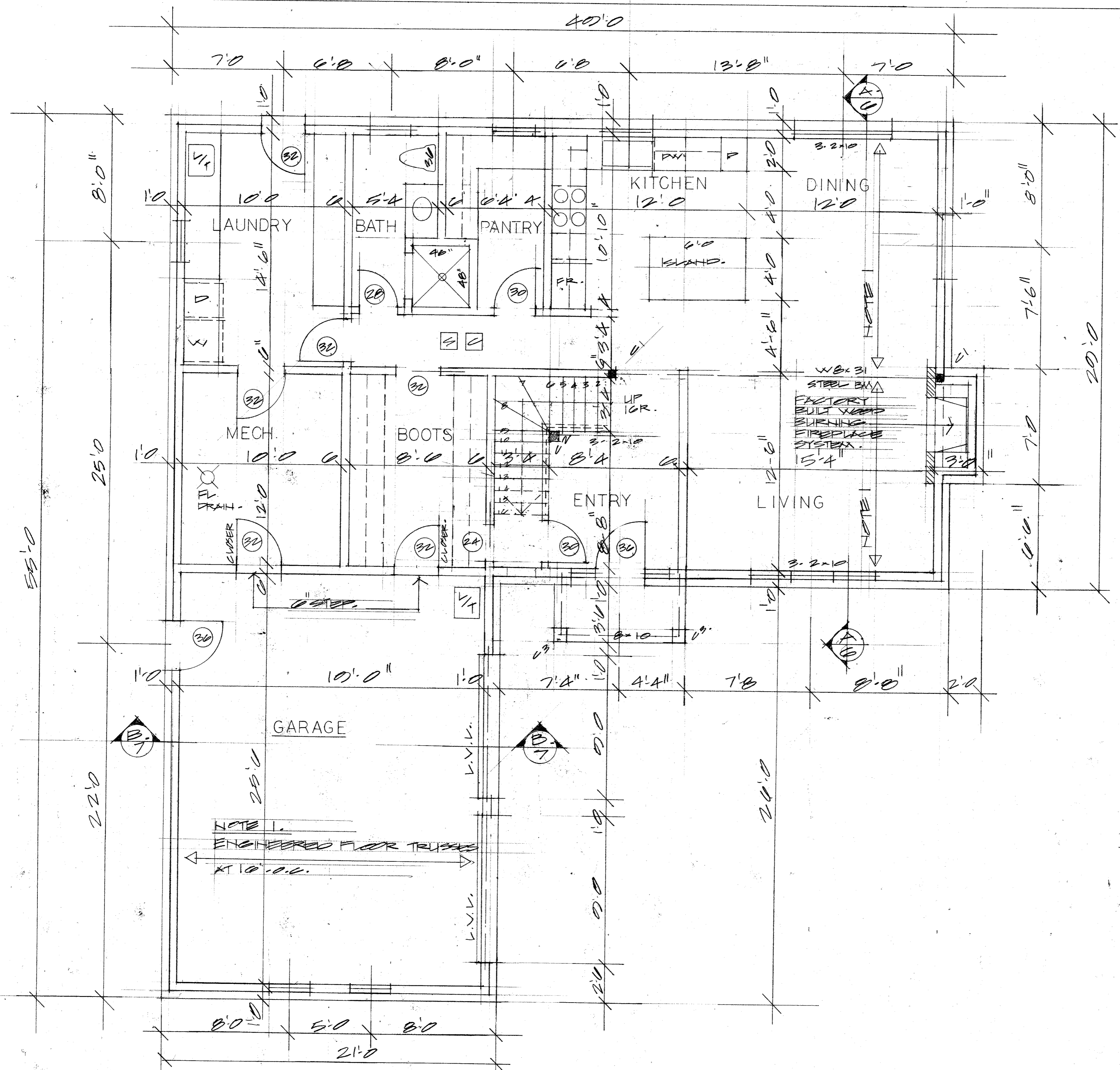
NOTES.

- C1. 4x4 HSS. WELDED TO STEEL DECK.
- C2. 6x6 WOOD COLUMN WITH FINISH TRIM.
- C3. 8x8 PINE COLUMN. OR 6x6 C/P FINISH TRIM.

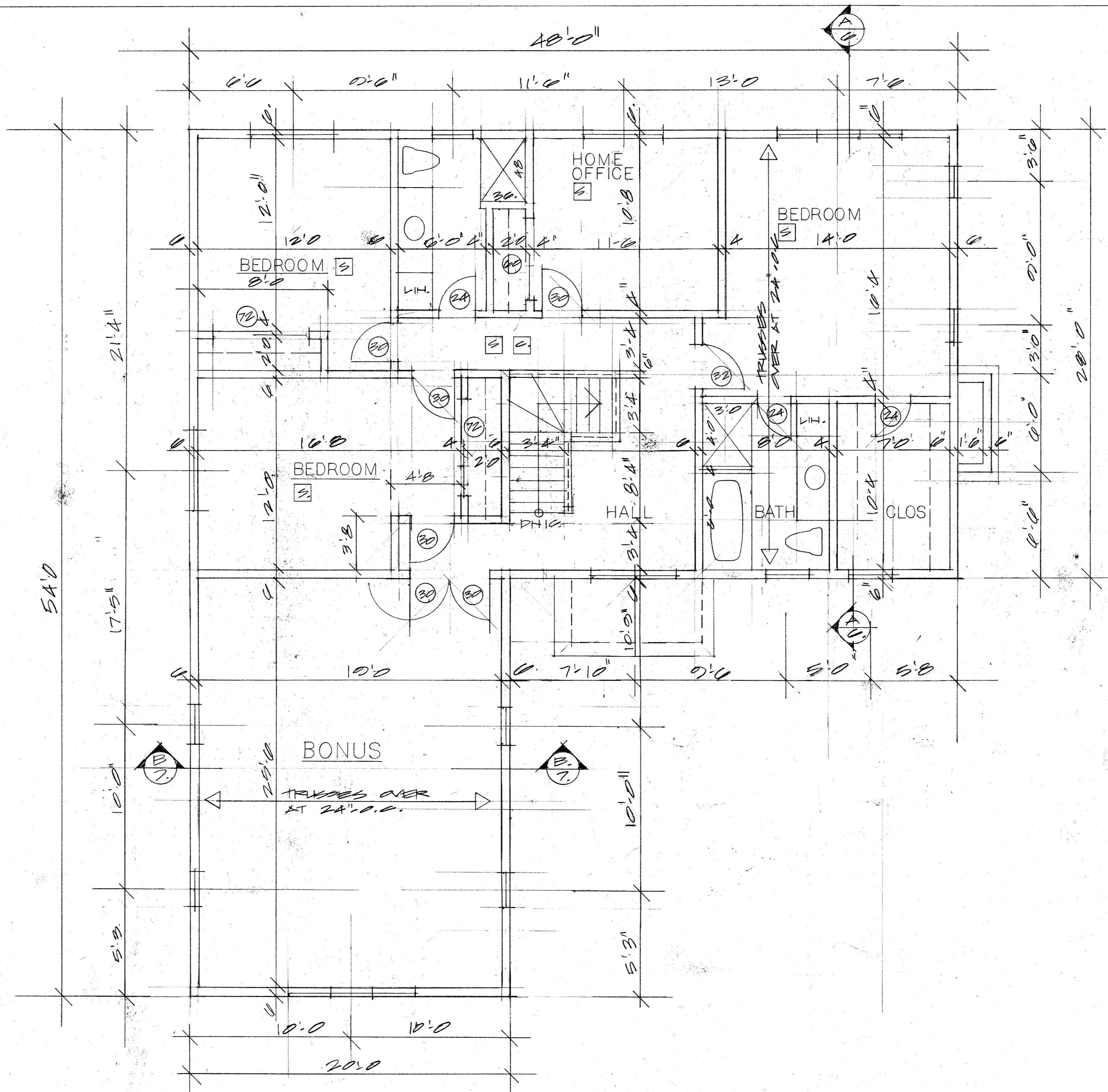
- [S] INTERCONNECT SMOKE ALARM.
- [C] CARBON MONOXIDE ALARM.

FIRST FLOOR PLAN.

1/4" = 1'-0" E.P.P.
APRIL 2-15. Z.

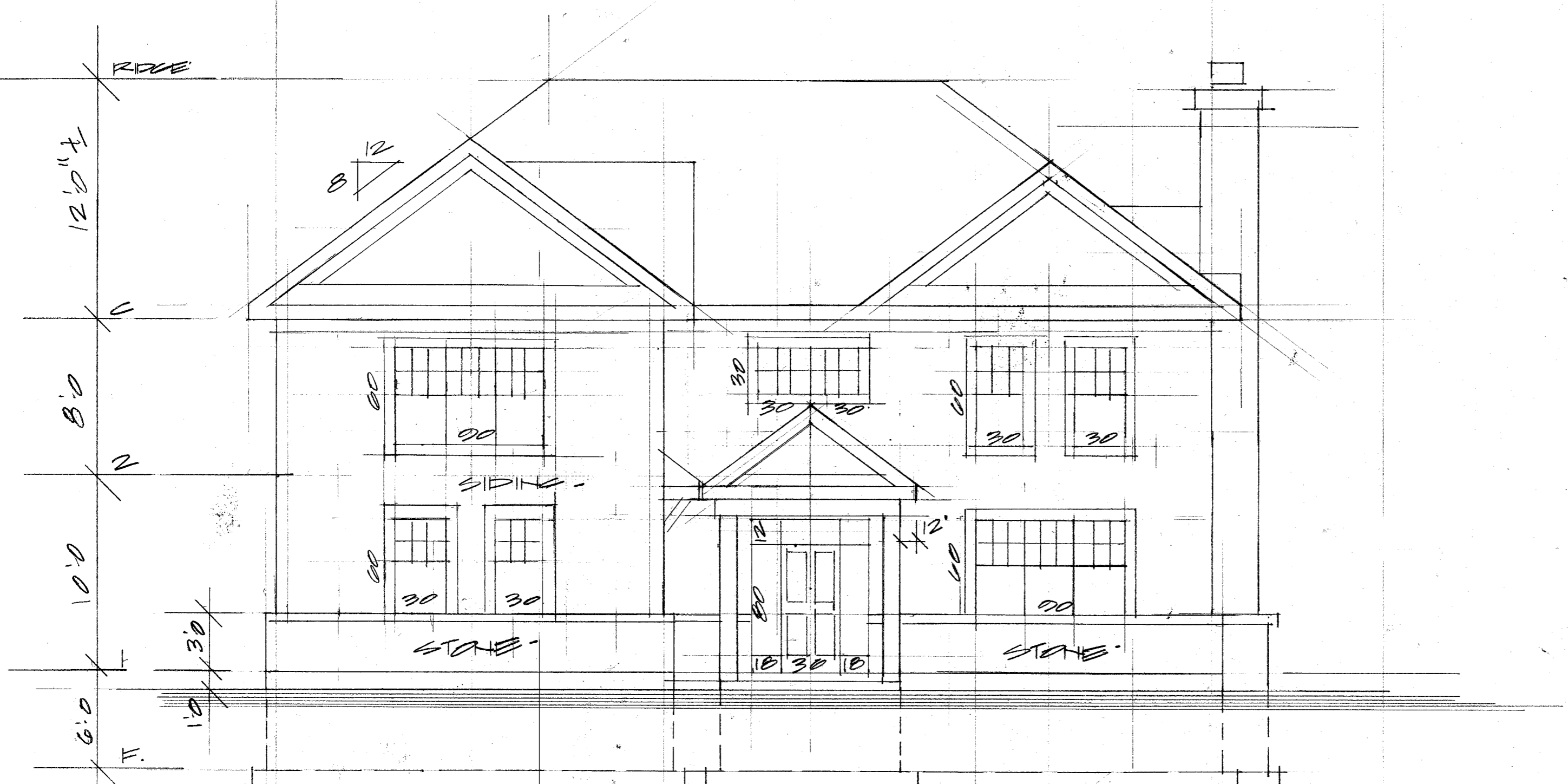


NOTE 1.
ENGINEERED FLOOR TRUSSES
AT 10'-0".

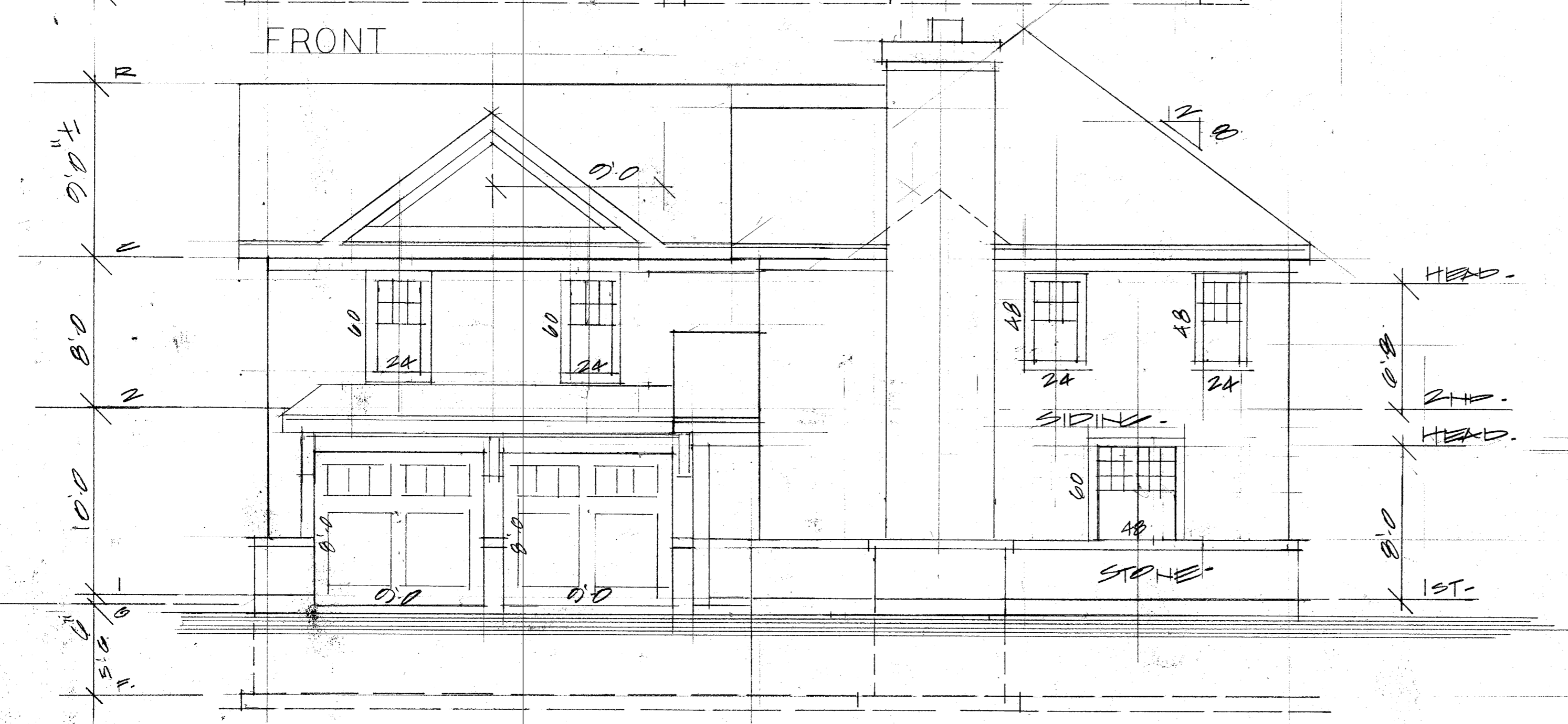


SECOND FLOOR PLAN.

1/4"	EXP.
1/16"	
APRIL	
2-19	3.

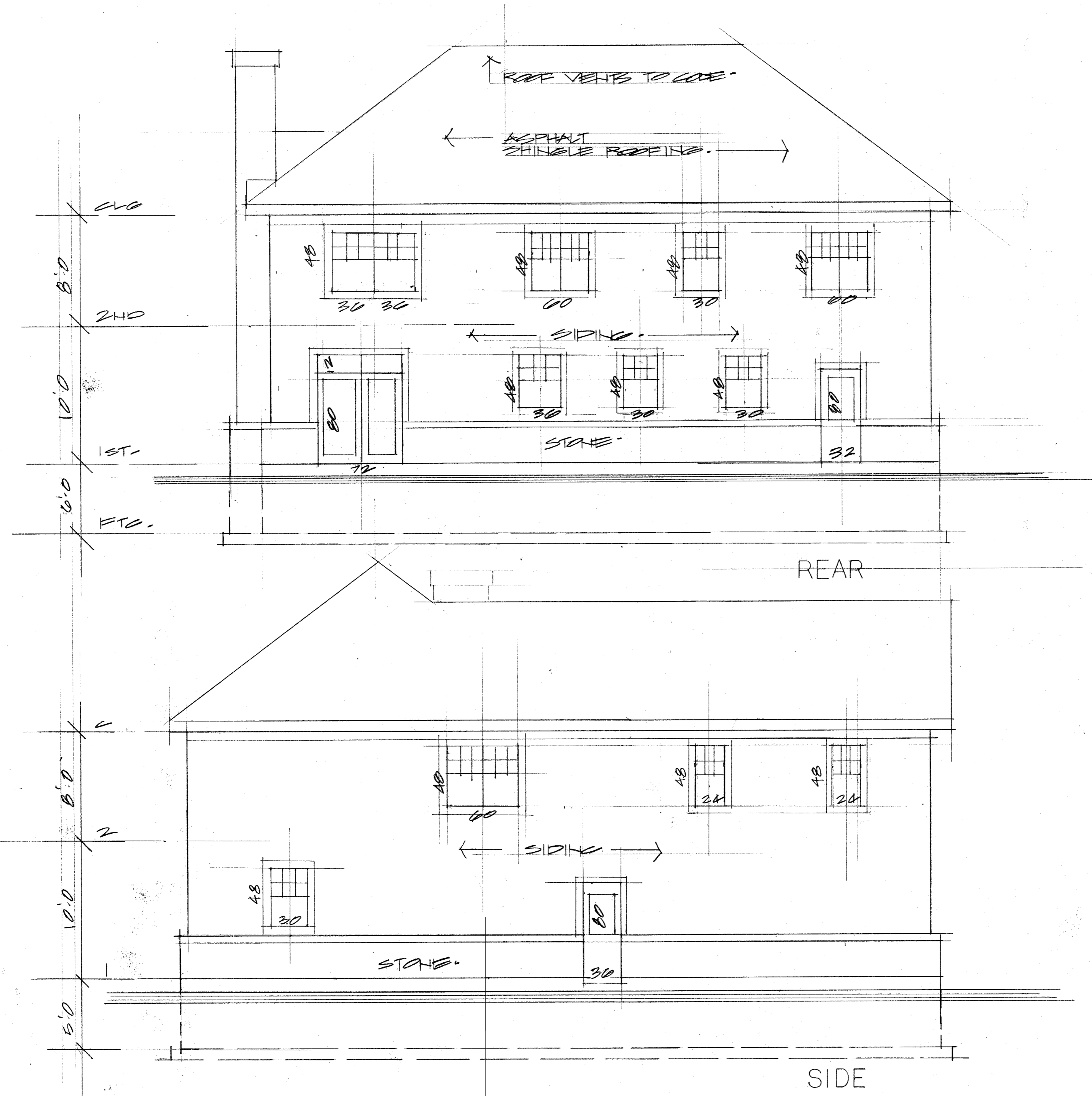


FRONT



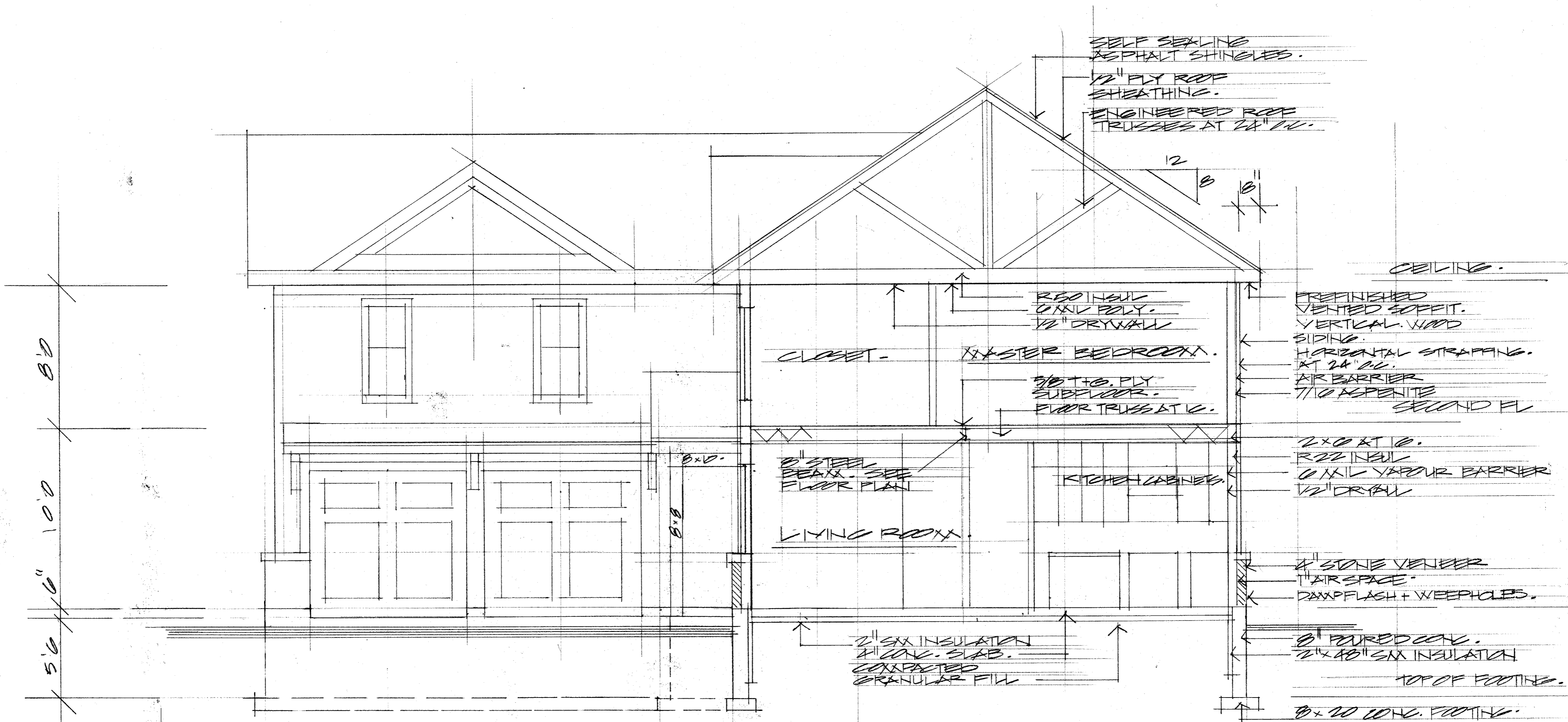
SIDE

FRONT AND
SIDE
ELEVATION.
3/16" = 1'-0"
APP.
2-15. 4-

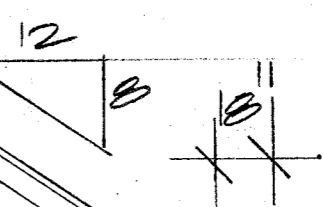


REAR AND
SIDE
ELEVATIONS

3/16	EPP.
-1'-0	
APRIL	5.
2-15.	



SELF SEALING ASPHALT SHINGLES.
 1/2" FLY ROOF SHEATHING.
 ENGINEERED ROOF TRUSSES AT 24" OC.



CEILING.

RED OAK GYPSUM POLY.
 1/2" DRYWALL

PREFINISHED VENTED SOFFIT.
 VERTICAL WOOD SIDING.
 HORIZONTAL STRAPPING AT 24" OC.
 AIR BARRIER
 7/16 ASPENITE SECOND FL

CLOSET - MASTER BEDROOM.

5/8" T&G PLY SUBFLOOR.
 FLOOR TRUSSES AT 16"

2x0 AT 16".
 R22 INSUL.
 GYPSUM VAPOR BARRIER
 1/2" DRYWALL

8" STEEL BEAM - SEE FLOOR PLAN

KITCHEN CABINETS

LIVING ROOM.

4" STONE VENEER
 1" AIR SPACE
 DAMPFLASH + WEEP HOLES.

2" SX INSULATION
 4" CONG. SLAB.
 COMPACTED GRANULAR FILL

8" Poured CONG.
 2" x 40" SX INSULATION
 TOP OF FOOTING.

8" x 10" CONG. FOOTING.

BUILDING SECTION.

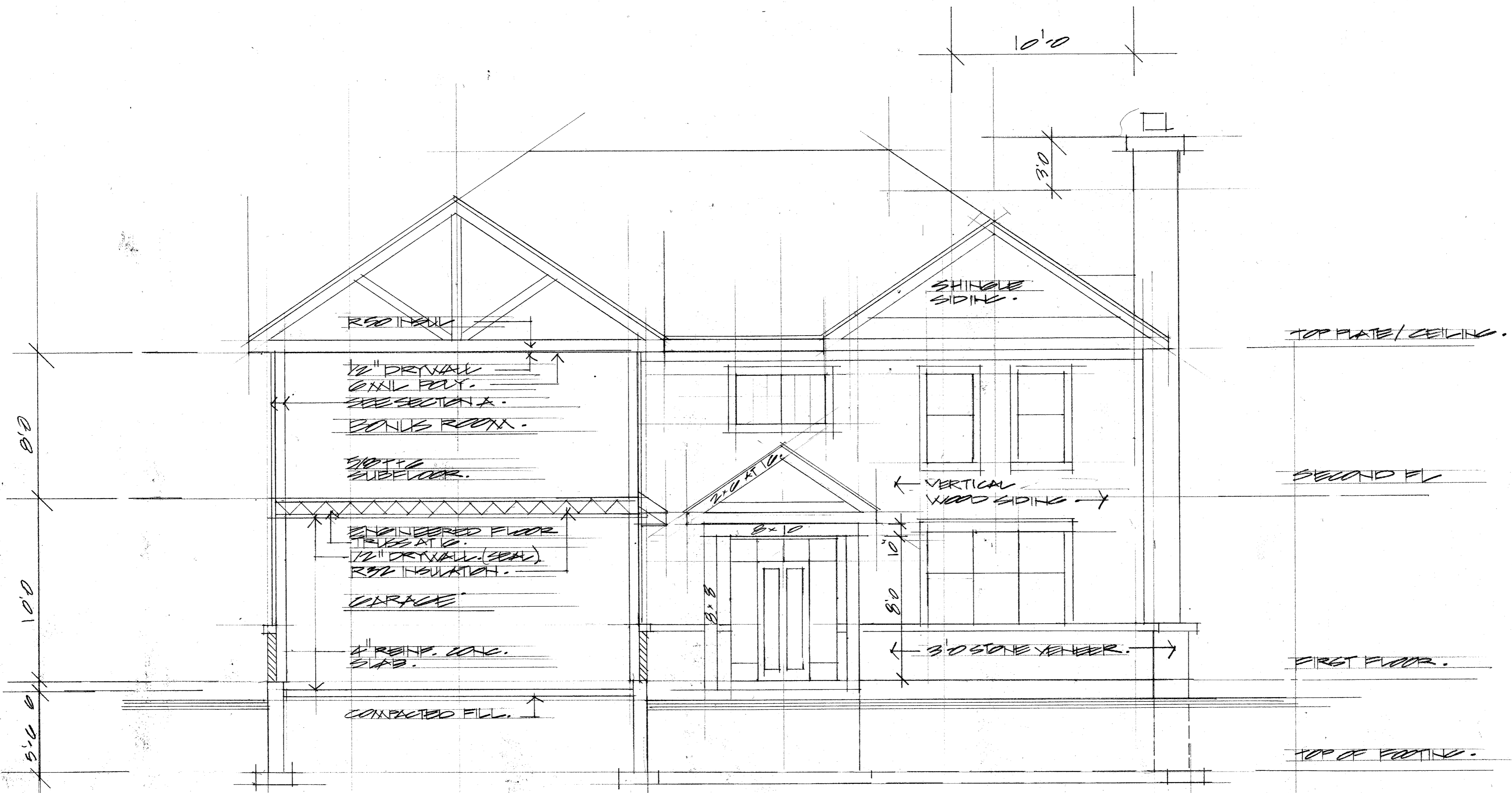


8'0"
 10'0"
 5'6"

SECTION A

1/4" = 1'-0" EXP.

APRIL 2-15 C.



BUILDING SECTION.

B.
7.

SECTION B	
1/4" = 1'-0"	E.P.P.
APRIL 2-15.	7.